

**PPP2R5E Antibody (C-term)**  
**Purified Rabbit Polyclonal Antibody (Pab)**  
**Catalog # AP21502b**

**Specification**

---

**PPP2R5E Antibody (C-term) - Product Information**

Application	WB,E
Primary Accession	<a href="#">Q16537</a>
Reactivity	Human
Host	Rabbit
Clonality	polyclonal
Isotype	Rabbit IgG
Calculated MW	54699

**PPP2R5E Antibody (C-term) - Additional Information**

**Gene ID** 5529

**Other Names**

Serine/threonine-protein phosphatase 2A 56 kDa regulatory subunit epsilon isoform, PP2A B subunit isoform B'-epsilon, PP2A B subunit isoform B56-epsilon, PP2A B subunit isoform PR61-epsilon, PP2A B subunit isoform R5-epsilon, PPP2R5E

**Target/Specificity**

This PPP2R5E antibody is generated from a rabbit immunized with a KLH conjugated synthetic peptide between 448-482 amino acids from the C-terminal region of human PPP2R5E.

**Dilution**

WB~~1:2000

E~~Use at an assay dependent concentration.

**Format**

Purified polyclonal antibody supplied in PBS with 0.09% (W/V) sodium azide. This antibody is purified through a protein A column, followed by peptide affinity purification.

**Storage**

Maintain refrigerated at 2-8°C for up to 2 weeks. For long term storage store at -20°C in small aliquots to prevent freeze-thaw cycles.

**Precautions**

PPP2R5E Antibody (C-term) is for research use only and not for use in diagnostic or therapeutic procedures.

**PPP2R5E Antibody (C-term) - Protein Information**

**Name** PPP2R5E

**Function** The B regulatory subunit might modulate substrate selectivity and catalytic activity, and

also might direct the localization of the catalytic enzyme to a particular subcellular compartment.

#### **Cellular Location**

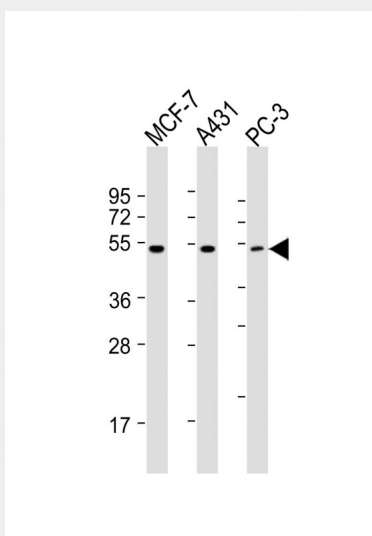
Cytoplasm.

#### **PPP2R5E Antibody (C-term) - Protocols**

Provided below are standard protocols that you may find useful for product applications.

- [Western Blot](#)
- [Blocking Peptides](#)
- [Dot Blot](#)
- [Immunohistochemistry](#)
- [Immunofluorescence](#)
- [Immunoprecipitation](#)
- [Flow Cytometry](#)
- [Cell Culture](#)

#### **PPP2R5E Antibody (C-term) - Images**



All lanes : Anti-PPP2R5E Antibody (C-term) at 1:2000 dilution Lane 1: MCF-7 whole cell lysates Lane 2: A431 whole cell lysates Lane 3: PC-3 whole cell lysates Lysates/proteins at 20 µg per lane. Secondary Goat Anti-Rabbit IgG, (H+L), Peroxidase conjugated at 1/10000 dilution Predicted band size : 55 kDa Blocking/Dilution buffer: 5% NFDN/TBST.

#### **PPP2R5E Antibody (C-term) - Background**

The B regulatory subunit might modulate substrate selectivity and catalytic activity, and also might direct the localization of the catalytic enzyme to a particular subcellular compartment.

#### **PPP2R5E Antibody (C-term) - References**

Zolnierowicz S.,et al.Biochem. J. 317:187-194(1996).  
McCright B.,et al.J. Biol. Chem. 271:22081-22089(1996).  
Ota T.,et al.Nat. Genet. 36:40-45(2004).  
Heilig R.,et al.Nature 421:601-607(2003).  
Kitajima T.S.,et al.Nature 441:46-52(2006).

